

Message from Chair

Ruth Sachter

—Potlatch is a shared conversation arising from our love of science fiction and fantasy literature.

—Potlatch is a small, cozy convention with a single-track program, book-filled dealer's room, writer's workshop, and hospitality suite. No Guests of Honor, just a Book of Honor.

—Potlatch is the home of the Clarion West Scholarship Auction.

—*Potlatch is what you make it.*

So tell us what you would like. Help us plan and run it. Come and have a wonderful time.

Use our contact info or join our group and post your question, concern or comment there.

Go to <http://groups.google.com/group/Potlatch-16-Discussion>, and click on 'join this group' to participate.

We had been trying to 'align our fannish stars' for some years now to bring Potlatch back to Portland and finally have succeeded. Many of us were on the Potlatch 5 committee and have contributed to more recent Potlatches both north and south.

In 1996 Potlatch 5 was held at the old Imperial Hotel in downtown Portland, a handy

location both to Powells and assorted restaurants. This proved useful when the ice storm of the decade made skating across the street for dinner an interesting experience.

We'd just as soon not repeat that experience (or the flood that followed). The cozy Imperial is no more; it's been transformed into the stylish Hotel Lucia with prices to match. And in an attempt to avoid ice storms, our dates are a bit later in the year, March 9-11, 2007.

This time Potlatch will be on the east side of the Willamette at the comfy Red Lion Hotel Portland – Convention Center.

Last century when it was the Cosmopolitan, OryCon '84 (#6) was there. More recently it was the site of Smofcon 23 which is when we realized that it could be a good hotel for Potlatch

(several Smofcon attendees independently making that observation helped confirm our choice). We have a good room rate, free wifi, and free mass transit access as Trimet's fareless square extends across the river to the Convention Center area.

Our Native Guide Kate Yule will help you navigate the nearby NE Broadway neighborhood and choose among the ever-increasing number of sushi and Thai restaurants. There are plenty of other dining options, brewpubs, and amenities such as supermarket, drugstore, and major shopping center within a few blocks.



potlatch 16
Portland, Oregon
March 9-11, 2007

Programming

Patty Wells

As is traditional for Potlatch, we have chosen a book of honor. Here we've cheated and chosen a wonderful NESFA press collection: *Dimensions of Sheckley: The Selected Novels of Robert Sheckley* edited by Sharon L. Sbarsky. It allows us to slip in a lot of Sheckley and recognize how much we admire NESFA Press at the same time.

We know it isn't a requirement that our author have passed on to that great worldcon in the sky (well, that's where I'm planning on going anyway). However, Sheckley was a Portland resident for many of the last years of his life, and one of our finest.

When the concept of book or author of honor came up, Sheckley was my suggestion. When I was an impressionable young reader, out in the middle of nowhere, I started with Andre Norton, and moved on to the big three: Asimov, Clark, Heinlein. It was marvelous stuff, but I feel like I didn't get my mind completely bent until I found Sheckley. He was delightfully subversive and funny. (For those of you wondering why I didn't mention PK Dick, it was because he wasn't allowed in our library.)

So, there is one item to build off of Sheckley where everyone can play. What author or work bent your mind into being a fan? Was it a body of work, or were there Ace Doubles, or library books that woke you up. If you have ratty old paperbacks (I like rereading the original editions of these things), bring one along. I'm betting that there are wonderful things out that some of us have missed. And think what a lovely, SF that Bent my Mind list we could compile.

For other programming we would aspire to presenting items with even a shade of the humor, wit, and sense of the subversive of Robert Sheckley. To do this, we can use ideas, volunteers and your participation. David Levine and I are looking forward to your ideas and to building the best Potlatch program we can.

Book of Honor

Ruth Sachter

Dimensions of Sheckley is in print and should be generally available. But if you don't have a copy, you'll be pleased to know that NESFA Press is offering Potlatch members a 20% discount on both **Dimensions of Sheckley: The Selected Novels of Robert Sheckley**, our Book of Honor, and its companion volume **The Masque of Mañana** (the short story collection published for Interaction).

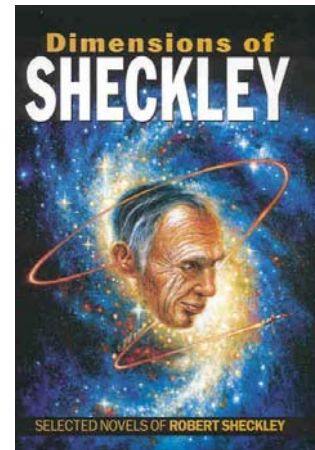


Table of Contents

- Introduction by Mike Resnick
- *Immortality, Inc.*
- *The Journey of Joenes*
- *Mindswap*
- *Dimension of Miracles*
- *The Minotaur Maze*
- Afterword by Tom Gerencer

ISBN: 1-886778-29-9

Page count: 538

Size: 5-1/2" x 8-1/2"

Published: January 2002

Edited by Sharon L. Sbarsky and Mike Resnick

Cover art by [Bob Eggleton](#)

Cover design by Alice N. S. Lewis

Go to www.nesfa.org/press/potlatch/ to order your copy at the special Potlatch members only price.

Clarion West Scholarship Auction

<http://clarionwest.org/website/index.html>



The Clarion West Scholarship Auction at Potlatch is a significant fundraiser for the non-profit Clarion West Writers Workshop. We expect to follow recent practice with both a silent auction during the day in programming space and a lively oral auction.

Last year, the Auction was shifted from its traditional Sunday after-the-Banquet spot to Saturday evening. We thought this new time worked well and will try it again.

While the position of Auction coordinator is open (as I write this), that's no reason to delay sending in your auction donations of cool stuff, nifty books, or that character-naming opportunity to this tax-deductible science fiction cause (and, of course, monetary donations are always welcome).

Please mail to:
Potlatch 16 Clarion West Auction
c/o OSFCI
P.O. Box 5703
Portland, OR 97228-5703

Have questions about what to donate, need a street address for shipping, or want to donate your time and expertise to make this a successful fund raising auction, please write to Ruth at chair@potlatch-sf.org

Writer's Workshop

Mary Rosenblum
workshop@potlatch-sf.org

Potlatch 16 will again offer a Writers Workshop for a nominal fee. Short stories and novel chapters plus a synopsis will be accepted, and participants will be matched with two professionals in each section.

Short stories will be accepted up to 5000 words in length. If you wish to submit a novel excerpt, include the first chapter, up to 5000 words and a 1 – 3 page synopsis of the entire plot including the end please. Stay tuned for further details.



Dealers' Room

Paul Wrigley

Potlatch 16 will have a dealers' room. If you are interested in selling at Potlatch, please contact Paul Wrigley at dealers@potlatch-sf.org.

OUR HOTEL

John Lorentz



Red Lion Hotel Portland – Convention Center (photo from Red Lion Website)

Our hotel is the Red Lion Hotel Portland - Convention Center, and the room rate is \$79/night (plus tax).

The hotel is located in the heart of Portland's Lloyd District in the core of the city. Along with being across the street from the Oregon Convention Center (and the Convention Center light rail station), the Red Lion is within walking distance of numerous restaurants and the (large) Lloyd Center shopping center. It is located within Portland's "Fareless Square", a free bus & light rail zone that also includes Portland's downtown shopping district (as well as Powell's City of Books).

The hotel has been recently renovated and each room includes free wireless Internet service, a refrigerator and coffeemaker. Many of the rooms have flat panel televisions, and the Hospitality Suite looks great.

Making a Reservation

It is now possible to make a reservation at the convention rate from the link on the Potlatch 16 web site (<http://www.potlatch-sf.org/>):

- Go to Hotel
- Click on the To reserve a room link, or go directly to

<http://redlion.rdln.com/HotelLocator/HotelOverview.aspx?metaID=38>

- Scroll down to Group/Convention code, at the right side of the page.
- Select your check-in and check-out dates, and enter the group block number POTL0307 and click Check Availability.
- The hotel listed should be Red Lion Hotel Portland Convention Center, with the \$79 room rate (except for the premium rooms).

If this doesn't work, you can phone or fax your reservations to the hotel (be sure to ask for the Potlatch rate by using the "POTL0307" code).

Phone: 800-343-1822 or 503-235-2100
Fax: 503-238-0132

Please make your room reservation as soon as you can—the block expires on February 10, 2007 and the remaining rooms will then be released to the public

Hospitality

Michael 'Czarcasm' Pinnick

Hospitality will be located in a hotel suite (with both adjoining bedrooms) on the 4th floor directly below our function space.

Current plans are for a variety of good food to nibble on along with assorted beverages.

Expect to see Oregon cheeses, chocolates, micro-brewed sodas and beers, good coffee, and much more.

There will be room to relax and chat or play word games (more about that in the next PR).

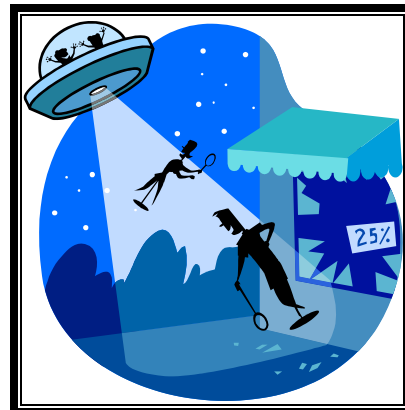
Have a special request? Let me know. But no chocolate fountains. Please consider volunteering to help during the con even if it's just for a couple of hours. Thank you!

AM I A MEMBER?

Check the list below. If your name does not appear, then you will want to fill out the registration form on the next page ASAP and get it mailed in.

Aahz
Jae Leslie Adams
Karen Anderson
Matt Austern
Allen Baum
Alan Bostick
Berni Phillips Bratman
David Bratman
Elinor Busby
Scott Custis
Linda Deneroff
Jules Dickinson
Doug Faunt
Jeanne Gomoll
Cynthia Gonsalves
Mary Hart
Bill Humphries
Brady Johnson
Jordin Kare
Mary Kay Kare
Jerry Kaufman
Janet Lafler
Alica Lafler-Austern
Ruth Leibig
David Levine
John Lorentz
Marci Malinowycz
Linda McAllister
Rich McAllister
Julie McGuff
Luke McGuff

Vonda N. McIntyre
Fred C. Moulton
Debbie Notkin
Linda Pilcher
Michael Pinnick
K. Dawn Plaskon
D. Potter
Mary Rosenblum
Ruth Sachter
Peggy Rae Sapienza
Stef
Ian Stockdale
Cathy Sullivan
Amy Thomson
Suzanne Tompkins
Edd Vick
Katie Vick
Patty Wells
Donya Hazard White
Tom Whitmore
Art Widner
John Williamson
Paul Wrigley
Keith York
Kate Yule



Potlatch 16 Registration

RATES

Our current rates are \$45 through November 30, 2006, and \$50 until January 1, 2007. Supporting memberships are \$10 at all times.

There's the traditional pay-by-mail option for sending checks or money orders which should be made payable to "OSFCI-Potlatch".

On the credit/debit card side, we have a link on the site for PayPal transactions, using VISA, MasterCard, Discover, or American Express. You do not need to have a PayPal account, or to create an account, in order to purchase Potlatch 16 memberships.

We do not have off-line credit card processing.

REGISTRATION FORM

Make all checks/money orders payable to OSFCI-Potlatch and mail to:

Potlatch 16
c/o OSFCI
PO Box 5703
Portland OR 97228-5703
Potlatch16@gmail.com
(503) 283-0802 - Info/Registration

Name _____

Address: _____

City: _____

State/Prov. _____ Zip/Postal _____ Country _____

Email _____

Phone _____

Are you interested in being on program or volunteering to help run Potlatch 16?

May we list your name in print & web lists? _____

Potlatch 16 is sponsored by OSFCI, a non-profit 501 (c) 3 corporation

COMMITTEE LIST

(To date)



Chair: Ruth Sachter

chair@potlatch-sf.org

Dealers Room: Paul Wrigley

dealers@potlatch-sf.org

Hospitality: Michael Pinnick

hospitality@potlatch-sf.org

Hotel: John Lorentz/John Williamson

hotel@potlatch-sf.org

Local Guide: Kate Yule

local@potlatch-sf.org

Registrar: John Lorentz

registrar@potlatch-sf.org

Programming: David Levine/ Patty Wells

programming@potlatch-sf.org

Publications: Linda Pilcher

publications@potlatch-sf.org

Treasurer: John Lorentz

treasurer@potlatch-sf.org

Web: David Levine

website@potlatch-sf.org

Writer's Workshop: Mary Rosenblum

workshop@potlatch-sf.org

HOW CAN I HELP?

Yes, some people could be having too much fun planning this Potlatch. You can be a spoiler by joining us as a committee member, assistant, or general volunteer. Please contact chair@potlatch-sf.org for more information.



Potlatch 16 is sponsored by OSFCI, a non-profit 501(c)3 corporation,

For more information on OSFCI and the events and activities it sponsors, please check us out on the web at:

www.osfci.org

Northwest Coast design Space Alien artwork courtesy your editor's husband, Jim, and used by permission.